



Outlook

June 2026

**Abbots Langley
and Bedmond
Parish
Magazine**

50p



SAVE THE LYCHGATE

The lychgate which stands at the main entrance to the churchyard of St Lawrence Church was commissioned as a memorial to Queen Victoria in 1901 and paid for by donations from the people of the parish.

It was designed by Architect Fredrick Kinnier—Tate of St Albans and constructed by a local tradesman Edwin Glennister. The construction was carried out over 3 months during the summer of 1902.

The construction is primarily an oak timber framed structure with traditional mortice and tenon joints to the upper sections and with metal dowels and through bolts to the balustrade, posts and ground sill.

After one hundred and twenty-four years of providing a focal point in the village, a fitting entrance to the churchyard and shelter for all who need it, it is now in need of specialist restoration.

The cost of this work is £15,000 and once again we need the help of all who live in the village, use the facility or value its importance to help us restore it for generations to come.

**PLEASE DONATE
WHATEVER YOU CAN
USING THE QR CODE
or THE DONATE PAGE
ON OUR WEBSITE**





REGULAR SERVICE TIMETABLE

Sunday

8.00am Eucharist
at St. Lawrence

9.30am Eucharist
at St. Lawrence

11.30am Eucharist
*at the Church of the
Ascension*

Wednesday

12.00 noon Eucharist

Monday to Saturday

9.15am Morning Prayer

WEEKLY EVENTS

*Weekly events do not
happen on a bank holiday.*

Monday

10.00am Coffee Morning
Breakspeare Room

Tuesday

10.30am Tiny Tots
Breakspeare Room
(Term time only)

Thursday

8.00pm Friends and Faith
Breakspeare Room

Friday

10.00am Bedmond Bells
Craft and Chat
The Tin Church

2.00pm Craft and
Conversation
Breakspeare Room

June Calendar

OTHER EVENTS

Tuesday 2nd

8.00pm Blokes
Breakspeare Room

Wednesday 3rd

10.00am Coffee Morning
The Tin Church

2.00pm Compassionate
Café
Breakspeare Room

Saturday 6th

9.30am Churchyard
Working Party
St Lawrence Churchyard

Sunday 7th

5.00pm Breathing Space
St Lawrence Church

6.30pm Nameless Youth
Group
Breakspeare Room

Wednesday 10th

11.00am Mother's Union
Breakspeare Room

3.30pm Messy Church
Methodist Church

Saturday 13th

12.00pm Abbots Langley
Carnival

Sunday 14th

5.00pm A Special **Choral
Evensong for Music
Sunday**
St Lawrence Church

Friday 19th

2.00pm Friday Singers
Concert



St Lawrence Church

Saturday 20th

12.00pm Church Fete
St Lawrence Church

Sunday 21st

1.00pm Sunday Lunch
St Lawrence Church Hall

5.00pm Taizé Service
St Lawrence Church

6.30pm Nameless Youth
Group
Breakspeare Room

Saturday 27th

10.00am-Abbots Langley
Festival Event: Tithe Map
Display, Local History
Society
St Lawrence Church

Sunday 28th

3.30pm The Spark Service
St Lawrence Church



Sunday 9th August **St Lawrence Day**

11am Service
BBQ to follow

Saturday 3rd October
**Friends of St Lawrence
Quiz Night**
Details to follow



M. K. Ginder & Sons FUNERAL DIRECTORS

"The Family Concern; Concerned About Families"

Serving the Community Since 1983

Since 1983 we have been looking after families from Watford and the surrounding areas at their time of need. We pride ourselves on being the Local Independent **Family-Run Funeral Directors** offering the **Complete Funeral and Memorial Service**.



GOLDEN CHARTER
FUNERAL PLANS



M K Ginder Limited trading as M.K. Ginder & Sons Funeral Directors is an appointed representative of Golden Charter Limited trading as Golden Charter Funeral Plans which is authorised and regulated by the Financial Conduct Authority (FRN:965279).



**Call Us Now
for your free
Funeral Plan
brochure**

51 High Street
Abbots Langley
WD5 0AA
Tel: 01923 269994

**Or we can make the
arrangements at your home
at a time that suits you.**

0800 111 111

Further details are available on our website: www.ginder.co.uk



Contact Us:

07852 146857



LITTLE FAWNS
Preschool & Forest School
St Laurences Church Hall
Abbots Langley

15 & 30 hour
Childcare Support
Funding available
for 2, 3 & 4 year
olds

For children
age 2-5 years old
Open 8am -
4.30pm
Monday - Friday

Shared care
available with
Abbots Langley
School Nursery
& local
Childminders



[www.littlefawnspreschool.co.uk/
abbots-langley](http://www.littlefawnspreschool.co.uk/abbots-langley)



Your local office gives advice on a wide range of topics including debt, employment, relationship breakdown, benefits, consumer & housing issues. Current opening times as below. Please see our website for email enquiries and full details of our service:

www.threeriverscab.org.uk
Abbots Langley: 01923 271 707 Mon 10-4, Tues & Thurs 10-3, Wed & Fri 10-1
Rickmansworth: 01923 293 136 Mon, Tues & Thurs 10-3.30, Wed & Fri 10-12.30
South Oxhey: 0208 515 8321 Mon – Fri 10-4
County wide Adviceline: 0800 144 8848, Monday to Friday 9am to 5pm.
This number also uses Relay UK, type in 18001 then 0800 144 8848

Messy Church

We were back in the Methodist Church for our regular Messy Church session in May after having had our Easter Messy Church at St Lawrence Church.



We had a super afternoon learning about the parable of the Prodigal Son. Dennis told us the story and some of the children acted out the parts of the Son and his Father. We learnt that just like the Son, we do things wrong and



need to say sorry and that God will forgive us just as the Father did. Our crafts illustrated the story with a moving model to remind the children of the parable and a very messy pig craft using lots of paint! Our food craft was also a pig, made with pink icing as we remembered how the destitute Son ended up working with pigs. We illustrated the theme of saying sorry



and God's forgiveness with heart shaped prayers and a "lollipop gate" with the words "welcome home" just as God welcomes us.

Our next Messy Church will be on Wednesday 10th June, 3.30–5.45pm in the Abbots Langley Methodist Church.

Please let us know if you are coming so that we can plan for the crafts and for Messy Tea which is the meal that we provide. Messy Church is free but donations are welcome.

Contact Wendy Meldrum on wendymeldrum@gmail.com or the Church Office on 01923 261795.

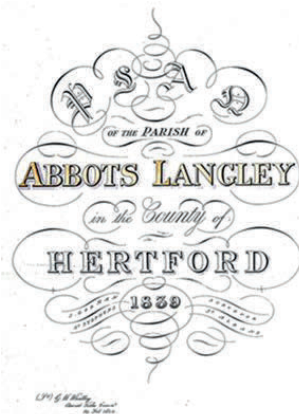
Please come and join in the fun . . . everyone is welcome!



Abbots Langley Tithe Map Display

On Saturday 27th June, as part of the Abbots Langley Festival, there will be a rare opportunity to inspect the 1839 Tithe Map of Abbots Langley at St Lawrence Church.

The display has been organised by the Abbots Langley Local History Society in collaboration with the Abbots Langley Parish Council and St Lawrence Church. It will include the 1839 map, as well as supporting videos and information showing a comprehensive view of the parish at that time.



The 1839 Tithe Map of Abbots Langley was the result of a survey following the passing of the Tithe Commutation Act of 1836. The Act replaced the out-date tradition of paying "tithes" with fixed monetary payments. Tithes were taxes which required one tenth of all agricultural produce to be paid annually to support the local church, clergy and lay landowners

After the passing of the Act Tithe Commissioners quickly appointed local surveyors, and by 1839 a map of the Parish of Abbots Langley had been produced along with an Award document which detailed the ownership of every house, field, wood and garden, and established who owned or occupied the land, its value and the tithes paid.

Assistant Tithe Commissioners then visited every parish to deal with and resolve any disputes, and final approval was given by the Tithe Commissioners in 1844. The map measures approximately 12 x 7 feet and was originally stored in the Vestry at St Lawrence Church, and subsequently at the Parish Council Offices.

The display will be open from 10am to 4.30pm. Entry is free, and refreshments will be available throughout the day courtesy of the Malawi Project team.

Mothers' UNION

At our May meeting we talked about our favourite hymns - many of them first sung at school but some newer ones, too. Some sung at our weddings and others at funerals of loved ones. We managed to download some unfamiliar ones on a mobile to listen to. We talked about whether it was the tune or the words that made them favourites – and mostly it was the words –

although the tunes are often important too! It was a good time of sharing.

We meet next on Wednesday 10th June at 11.00am in the Breakspear Room followed by Communion at 12.00pm. Please join us.

Contact pamrastall@live.co.uk for more information.

Churchyard in June



June is the month when we anticipate the arrival of the swifts. On Saturday 9th May four swifts were spotted at a high level just passing by. We have not

yet seen any circling the tower or flying low in the High Street. By the time this is published that of course that hopefully will have changed. Many of you will know that we have fitted swift boxes behind the louvers in the church tower. It can take up to four years for the swifts to move in and take up residence. Once they have done so they will return every year. We have had swifts nesting around parts of the tower but not yet in the nest boxes.

Young swifts do not return to nest until four years after they hatched. Older breeding pairs often start returning first, to the nest sites that they have used every year. The younger birds looking for a nest for the first time often do not arrive back until the end of May. Non breeding swifts may arrive back in June or July scouting out sites to be used in future years. We play swift calls morning and evening from the tower encouraging birds to think that other swifts are using the next boxes. We hope this will encourage them to investigate further. The 'bangers' as they are often called will go up to the boxes and 'bang' their wings or bodies against the box to see if the box is already taken. This is their way of assessing it for use in the future. Even if we do not get the boxes occupied this year, let us at least hope that some 'bangers' might come and check out the boxes for use in future years.

Church Fete

*Saturday 20th June 12.00–3.00pm
At the front of St Lawrence Church*

Could we ask for your support in three ways please:

1. DONATE . . .

- Bottles, tins, packets, toiletries or unwanted gifts for the tombola
- Cakes, jams or chutney
- Plants
- Raffle prizes

Please let us have the tombola items in advance but the others can be brought along on the day from 9.30am onwards or to the office on 19th June.

2. ON THE DAY . . .

- Give up a couple of hours to help on a stall or serve refreshments
- Help set up from 11.00am
- Help to clear up afterwards from 3.00pm

3. COME ALONG ON THE DAY AND BRING YOUR FRIENDS AND NEIGHBOURS

There will be plenty to entertain the whole family, including:
Tombola • Games: Coconut Shy • Cakes
Refreshments • Bouncy castle • BBQ

All proceeds will be donated to New Hope and Watford Food Bank.
Offers of help to Carol Higgs
crl.higgs@googlemail.com or
07791 901750.

News from the Annual Parochial Church Meeting (and the PCC!)

The APCM took place in the Church Hall on the evening of Thursday 21st May. Here are some of the highlights!

We began by taking a moment in silence to remember those members of the electoral roll who have died since the 2025 APCM: Tony Smith, Wendy Westoby, Brenda Redfearn, Rob Sheppard, Joyce Sones (and, though they weren't technically on the roll in 2025 but had been so for many, many years) Eve Durtnall and Don Hull. May they all rest in peace, and rise in glory.

The first item of business was to elect our churchwardens for the coming year: **Richard Baldwin** and **Pam Lewis**. Many thanks to them both for standing! **Tom Betteridge**, having served the maximum six consecutive years has stood down, and (though absent) was warmly thanked at the meeting for all he has done.

Andrew Procter was elected to the PCC for the first time, while **Anne Maskill** was re-elected. **Helen Shepherd** stood down from PCC, and **Pam Rastall** replaced **Richard Simon** as our representative on Watford Deanery Synod.

The Church's **Electoral Roll** (the closest thing we have to a membership list) now stands at 167, representing an increase of 21 from last year.

The **Fabric** report confirmed that our

buildings are in good order, largely thanks to the dedicated work of volunteers and the great generosity of the Friends of St. Lawrence. Of particular note in 2025 were the refurbishment of the South Porch, the work on the drains at the East End, and the installation of choir stall lighting (made possible by a very generous, anonymous, donation of £10k).

The **financial statements** showed that our finances are in good shape. As always, we paid our parish share in full, and we also managed to build up our reserves. The backbone of our parish finances is the regular planned giving by members of the congregation—so thank you! There was a very successful stewardship campaign in 2025 led by Tom Betteridge which, if all pledges are realised, will mean an increase in parish income of about £12k. Many thanks to Mr Chris Sanders, our Treasurer, for all his hard work in preparing the accounts.

The **Safeguarding Report** confirmed that the parish is operating in full compliance with the Church of England's national safeguarding policies. All of volunteers have completed the appropriate level of training for their roles—more than seventy people in total! We owe huge thanks to Roxanne Yau for another year's hard work as Safeguarding Officer.

The **Vicar** was glad to report that 2025 had seen a steady if not spectacular increase in weekly church attendance. There had been 27 weeks in 2025 when overall attendance was more than 110

people: in 2024 the comparable figure had been 20 weeks, in 2023 it had been 15 weeks. Our post-Covid recovery continues at roughly the same pace—maybe slightly ‘better’—as is happening across much of the Church of England. It’s worth noting though that we’re *still* not back to pre-Covid levels: in 2019 weekly attendance was usually in the mid 130s. One noteworthy feature of our increasing numbers is that it is not (mostly) a case of old faces coming back, but of new faces joining. In that connection, it was wonderful to take 5 adults for confirmation at the Abbey in October 2025—and, though this is strictly for next year’s APCM—7 more at Easter 2026.

Two new parish committees started life in 2025: the **Pastoral Committee** and the **Discipleship and Evangelism Committee**. The first will focus initially on strategic thinking around the church’s work with the bereaved, our support for the foodbank, and pastoral care within the congregation. The second looks at how our church will grow, both in numbers and in faith.

And some news from recent PCC meetings....

- The PCC has decided in principle to sell 40 Kindersley Way, following increasing complexity in the management of the tenancy. There has also been a recent change in Diocesan policy which places less emphasis on a parish having its own housing for curates—so selling the property in no way precludes us from having a curate in future.
- A new external professional contractor has been appointed to clean St. Lawrence’s Church, the Breakspear Room and the Church Hall.
- We have discontinued the search for a permanent organist at St Lawrence, finding ourselves in the happy position of having two excellent organists who are happy to divide the services between them—supported by various others who can help on occasion.
- The Property Committee is going to explore the costs and benefits of the possible installation of solar panels on the church hall roof.

FOR HIRE

The Parish of Abbots Langley has
3 venues available for your party, function or meeting.

Church Hall
(Fully equipped kitchen)
Breakspear Room
(Basic kitchen facilities)
Tin Church
(Basic kitchen facilities)

For more details or to discuss which venue is suitable for your needs, please contact the Church Office on 01923 261795 or email: adminstlawrence@abbotslangley.org.uk

From the Vicar

In praise of Evensong....

I attended Choral Evensong twice this week. Once at Westminster Abbey, where it is offered every day, and where hundreds came along on a random Monday evening. And once the previous evening, at St. Lawrence, where we do it once a month, and where the congregation of nine was only just smaller than the choir. Why do a service which so few people come to?

Well, that's not a stupid question, and at some point one does have to ask questions about viability. Rest assured, though, we're a long way from that with our Choral Evensong. And there are in fact very good answers to the question of why we do it.

Firstly, negatively speaking, it's not a performance or a concert. If we put on a concert where nine people turned up, we'd (probably) view that as an embarrassing failure, never to be repeated. The *point* of a concert is to have an audience: to move it, entertain it, to be enjoyed by it. Evensong, however, is worship. And that means that whilst of course it is great to have a congregation, they're not actually the primary point. Not, if you like, the primary audience. That's *God*. Evensong, first and foremost, is the offering of something beautiful to God.

Beautiful, and costly. As someone who has recently tried singing in a choir for the first time, I can tell you that choristers only make it look easy—



singing together harmoniously is actually really quite difficult. It takes care, effort, discipline, practice. In short, it costs. At Evensong, what a choir does on our collective behalf is offer something beautiful and costly to God. Not that God *needs* it, of course—the Old Testament prophets try to make that point all the time about the animal sacrifices of their day. But nevertheless, it is good for us to give. We're made that way, to pour out of ourselves, to give of our best.

So what's the congregation there for, then, if the choir is doing the offering? Well, maybe what until very recently most Christians thought they were doing in *all* the worship of the Church—taking part not by actually speaking the words, or doing the actions of the Eucharist say, but simply being there in full devoted attention. Letting something be done on your behalf, content to be part of the one body (the church) that worships as opposed to insisting on each individual having 'something to do'. Liturgy is not about giving people roles: it is about all of us being swept up in something greater than ourselves.

There's a reason why music and

singing are especially conducive to that sweeping, why people have always felt they bring you close to God—or else, that they do such a good job of faking closeness to God that they should be shunned. Think of a choir in full flow: it embodies so much of what Christians have always wanted to say about life in God. A choir is more than a group of individuals, but doesn't involve losing individuality. There's a rich, shared life—which is at once fully bodily (you won't get far without tongues and lungs!), and yet so much more than merely physical. And the sound, of course, when it works, touches the hearers' depths in ways that mere words alone never would. Congregation and choir alike are there to feed on the promise of God, embodied in the music.

And of course, the music comes set in a context. The problem with doing Evensong once a month, as we do, is that you easily forget it is simply the musical form of the Daily Office: the continuous worship of the church, with its daily cycle of Psalms and bible readings. Evensong is an almost entirely biblical service—if you attended every night, as was the original intention, you would soon be soaked to the marrow in the Bible. You would be taught as well as fed. Whilst the primary 'audience' for worship is of course God, worship is also how Christians grow.

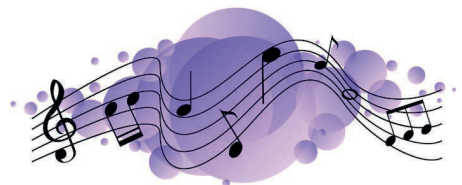
That's why we do Evensong. We do it because we know it's a good thing, to a large extent regardless of how instantly popular it is. Not everything in life, and especially not everything in church, is about appealing to the instincts of a

consumerist society. Yes, Evensong can seem strange and odd and even pointless at first—but largely to people who haven't learned to slow down long enough to discover the point.

I write this article this month not just because I've been to two very different Evensongs in the week, and it is therefore at the top of my mind. On June 14th the parish marks for the first time 'Music Sunday', making a point of celebrating the place of music in our church life. As part of the Abbots Langley Festival, we will have not only a celebratory Evensong, but an Open Evensong—that is, one in which we invite singers from all over the area to come and join us, in the choir or congregation. There'll be rehearsals on the Sunday afternoon, before the service at 6pm. If you've never been to Evensong before—or never sung in an Evensong choir—now is your chance. It will be challenging, it will be rewarding, it will be lovely—above all, it will be deeply, deeply worthwhile for all who sing and all who listen.

If you'd like to book your place in the choir, or for further details, please email our Director of Music Marianne Chapman on directorofmusic@abbotslangley.org.uk. See you on the 14th of June!

Peter



Local School News

Bedmond Academy Achieves 'Expected Standard' in All Areas Following Ofsted Inspection

Bedmond Academy is delighted to announce that following a recent Ofsted inspection, the school has achieved the Expected Standard in all areas. Bedmond Academy is a friendly and nurturing primary school in Hertfordshire, and part of Aspire Academies Trust. This outcome confirms that the school is delivering a high-quality education and providing strong support for the wellbeing and development of their learners.

Under the new Ofsted inspection framework, the 'Expected Standard' means that the school is doing everything that it should be doing. It is a high standard, designed to ensure that children are receiving everything they need and deserve throughout their education. The inspection recognised the school's positive learning environment, expertise of teachers, and the strong culture with "inclusion at its heart", helping children feel safe, supported and develop a love of learning. It highlights the re-design and improvements of their "ambitious curriculum" and how this has positively impacted the achievement of their learners, reflected by "pupils' high-quality work." Inspectors noted that "Pupils behave well ... are polite and respectful", adding that "around school, pupils of all ages play together harmoniously." Lora Grant, Headteacher at Bedmond Academy,



said: "It is wonderful that the inspection recognises the quality of teaching, learning and support that we offer our learners. Achieving the expected standard in all areas reflects the continued dedication and commitment of our whole school community." Karen Cohen, Executive Principal at Aspire Academies Trust, commented: "Lora and all of the staff at Bedmond Academy have worked extremely hard to create and embed a new curriculum that supports the teaching and learning needs of each individual child, and a culture underpinned by core school values that has created an environment where their children feel safe and can thrive. We are extremely proud."

The result of this inspection provides reassurance to parents and carers that Bedmond Academy is meeting national expectations and delivering a high-quality education, helping learners thrive academically, personally and socially. While celebrating this achievement, the school remains committed to sustaining and building on this high standard to ensure all children receive the best possible educational experience.

Friends of St Lawrence



The Friends of St Lawrence held a very successful evening of Wine Tasting in April. Not only was there a selection of wonderful wines to taste but also they were

accompanied by cheese and pâté platters. Jeff from Dalling and Q introduced each wine telling us a bit about the area it came from and the flavours we may or in my case (no pun intended) may not be able to taste. I just knew if I liked it or not and I liked all of them bar one. We were also able to order any wines at a 10% discount. For me this event is a firm favourite and I hope that it is repeated again in two years time. Definitely not to be missed. The total sum raised from the event was very respectable £701. Thank you to everyone who came along and participated. All the money raised from the Friends events goes towards the maintenance of St Lawrence Church.

The next Friends event is on the 4th and 5th of July. Just a reminder that if you got married at St Lawrence and would be happy lending us your wedding dress to display for these two days then now is the time to get in touch. From the Abbots Langley Festival programme that has recently come through your door you will see the entry on 4th and 5th July for the guided tours and wedding exhibition. The tours can be self guided or you can be shown round by one of the Friends. We are also hoping that the bell ringers will open the tower on the Sunday at

some point so if you have never been up to see the bells you might like to do that too.

We are sometimes asked who are the 'Friends of St Lawrence'. We always reply that we are all Friends if you come to one of our events, donate to support the church or value the church building and want to help to maintain it. We also have Patrons who are people that sign up to give a monthly donation to the Friends. This really helps us to work out which projects we can afford to support. If you are interested in becoming a Patron please contact us crl.higgs@gmail.com or wendymeldrum@gmail.com or ring the church office 01923 261 795 and ask them to pass on your details.

Carol Higgs

Christenings taken in May

Freddie Swaile

Farewell

After four years of dedicated service as Parish Administrator, Amanda Hawkes is moving on to a new chapter. We are deeply grateful for her hard work and commitment—not least the editing of Outlook—as well as the kindness and gentleness she brought to her role and to everyone she encountered in the Parish. Her contribution has been greatly valued, and she will be sincerely missed.

**Local Independent
Funeral Directors**
Working for Local People



J & S Funeral Service is committed to providing professional, compassionate and dignified funeral services at very competitive prices. Our funerals can be tailored to suit individual requirements, from the more elaborate cortege with horse drawn hearse to a simple eco funeral, and all receive the same high level of personal service and attention to detail.

We provide:

- ♦ a personal and professional 24 hour service;
- ♦ accessible office with car parking at front of premises;
- ♦ a private Chapel of Rest;
- ♦ funeral services for the whole of the West Herts area;
- ♦ services for all faiths and denominations;
- ♦ home arrangements, if preferred;
- ♦ Golden Charter pre-paid funeral plans;
- ♦ motor and horse drawn hearses;
- ♦ floral and monumental tributes.

17 School Mead, Abbots Langley WD5 0LA
Tel: 01923 262939 (24 hours)



Phil Davis

Professional, independent advice
for all your holiday and travel needs
ABTA Bonded ~ ATOL Holder

Tel: 01494 415010

phil.davis@thepersonaltravelagents.co.uk

Caroline Freeman BSc Hons & Licentiate in Acupuncture

Traditional Chinese Medicine & Five Element
Acupuncturist
Acupuncture for both physical and emotional
support & balance
Free 15-minute phone consultation to discuss
any symptoms you are experiencing and
answer any questions you have.

07590 528645

caroline@healinghandsacupuncture.co.uk
<https://www.healinghandsacupuncture.co.uk>

Penny Waterman School of Dance



Children's Ballet Classes

In St Lawrence's Church Hall, Abbots Langley
for ages 2 to 8 years
Saturday mornings
9.00 – 9.30am Ages 2 - 4 years
9.40 – 10.10am Ages 5 - 8 years

Tel: 01727 858632

Email: pwsd@pennywaterman.com
www.pennywaterman.com

**£50.00 per year to advertise
in this space.**

Contact the Church Office:
adminstlawrence@abbotslangley.org.uk

**£50.00 per year to advertise
in this space.**

Contact the Church Office:
adminstlawrence@abbotslangley.org.uk

Abbots Langley Gardening Society www.algs.org.uk

FOR ALL YOUR GARDENING NEEDS
Shop open all year, monthly Social Evenings
Newsletters, Outings, 2 Shows, discounted seeds
CAN YOU AFFORD NOT TO JOIN?
Jane Lay (Sec) - **01923 447281** (message only)

GARSTON TV & RADIO
**FOR ALL YOUR DOMESTIC ELECTRICAL
SALES, SERVICES & REPAIRS**
YOUR LOCAL EURONICS DEALER
74 HIGH STREET, ABBOTS LANGLEY
Tel - 01923 263738

Meeting Rooms for Hire
Church Hall (Fully equipped kitchen)
Breakspear Room (Basic kitchen facilities)
Church of the Ascension (Basic kitchen facilities)

PARISH DIRECTORY

The code 01923 precedes all the telephone numbers unless stated otherwise

Abbeyfield (West Herts) Society	Marcus Coultrup (334387)
Bedmond Bells WI	Janette Noonan 01923 266921 or Moira Bunting 01923 262242
Bedmond Village Carpet Bowls	Margaret Forrest (670989)
Bedmond Village Hall	Simon Smith (07401 331302)
Bell Ringing	Phill Higgs (07973 265666)
Bowling Club	off Langley Road (alongside the Scout HQ)
Breakspeare Community Pre-School	(by Tannerswood School) (274483)
Brownies, Rainbows and Guides	www.girlguiding.org.uk/interested
A/L Carers and Former Carers Support Group	Brenda Southorn 07933 144117
Churches Together	Brenda Southorn 07933 144117
Citizens Advice Bureau	01923 271 707, see advertisement on page 4
Community Centre	(to hire 07530 266293)
Cricket Club	www.abbotssc.hitssports.com
Evergreen Youth FC	Ian Turner (266640)
Family Planning	Garston Clinic (234525) Mon & Wed 6.00 – 8.00 pm
Flower Arrangement Society	Sylvia Clinton (262678)
Friends of St Lawrence	Wendy Meldrum (07710688633)
Friends of The Tin Church	Church Office: 01923 261795
Gardening Society	Jane Lay (447281)
Gilbert & Sullivan Society	Brenda Southorn 07933 144117
Hillside Residents Association	School Mead (261734)
Home Start (Helping Families Under Stress)	(248010)
Infant Welfare Clinic	St Saviour's Hall - Monday 1.30 to 3.00 pm (264639)
Jo Jingles	Mags Bilson (222529)
Library	Open: Mon & Thu 1.00pm-6.00pm; Tue & Fri 9.30am-6.00pm Sat 9.30am - 1.00pm; Wed & Sun closed all day
Little Fawns Pre School	07852 146857 Email: abbotslangley@littlefawnspre-school.co.uk
Local History Society	Or visit www.littlefawnspre-school.co.uk
Mothers' Union	Delva O'Reagan (267585)
Orchestra (ALO)	Pam Rastall Email: pamrastall@live.co.uk
Parent & Toddler Group	Penny Abbot (01442 873205)
Parish Council and Halls	Community Centre; Tue, Wed & Friday 9.15-11.15 am
Players (ALP)	Council Office, Langley Road (265139)
Royal British Legion	Jean James (461549)
St Lawrence Church Hall	Secretary: Chris Driscoll (01923 675563)
St Lawrence Church Flower Arrangers	Church Office (261795)
Scouts: 1st Abbots Langley (3rd North Watford)	Church Office (261795)
Langleybury Scout Group	Chair: Richard Gabriel chair@abbotslangleyscouts.co.uk
Youth FC	5thnwscouts@gmail.com
	Tim Denyer (270563)

metroprinting™

Commercial Print ■ Design ■ Packaging ■ Large Format

T: 01923 252812 E: sales@metroprinting.co.uk

www.metroprinting.co.uk



Malawi Project



As we go to print, we are making preparations for our “**Back to Bailey’s**” **Disco on Saturday 30th May**. It should be an amazing evening with 60s, 70s and 80s music plus a retro chicken in the basket meal!! We will report back on it in the July edition of Outlook!

Our next event will be a stall at this

year’s Carnival on **Saturday 13th June**. Come along, enjoy the Carnival and pop along to see us and support the Malawi Project stall. **If you have any jigsaw puzzles or games that we could sell on the stall that would be great . . . please get in touch.**

Contact wendymeldrum@gmail.com.

This year, although we won’t be directly participating in ALF (the Abbots Langley Festival), we will be providing refreshments at St Lawrence Church for the **Tithe Map Display on Saturday 27th June 10.00am–4.30pm**. Come along to St Lawrence’s, take the rare opportunity to inspect the Tithe Map of Abbots Langley and then support the Malawi Project by enjoying some homemade refreshments!

Bedmond Bells Women’s Institute

In April, our members renewed their membership and with some new members joining we are pleased to be in a comfortable position, both in numbers and financially, though of course we always welcome visitors and more potential new members.

Our May meeting was taken up with our AGM, when we elected the committee for the coming year and agreed with this year’s National WI Resolutions— Accessible Toilets for All and Action on Women’s Homelessness. These two resolutions will be discussed and voted on at the national AGM in June.

Other interesting items discussed at our

meeting were our forthcoming canal trip in June, when we will cruise the Grand Union Canal in the early evening, and prospective outings to Hitchin Lavendar Farm and Knebworth House later in the year.

We are taking part in Abbots Langley Carnival again this year on 13th June with a pitch on the field, so if you are visiting that event, do come and say hello.

For any further information, our contact details and information are below:
Carol Paley (President)—07932 007353
Moira Bunting—01923 262242
bedmondbellswi@gmail.com

Meetings are held in Bedmond Village Hall at 7.30pm on the 2nd Friday of each month except August.

A Rocha UK's Easy Eco Tips

Take part in citizen science or a local nature event. Citizen science is a way for ordinary people to get involved in scientific research or data collection. There are many projects to choose from and it's easy to make a contribution. Invite others to get involved with you too. Here are some projects that you could help with:

- Search your local beach with a shore survey: wildlifetrusts.org/shoresearch
- Spend ten minutes counting pollinators: ukpoms.org.uk
- Join in with Churches Count on Nature (6–14 June): arocha.org.uk/what-we-do/churches-count-on-nature/
- Do a Bee Walk: beewalk.org.uk
- Join Great Big Green Week (6–14 June): greatbiggreenweek.com

For more eco tips visit:
arocha.org.uk/wild-christian



QR Codes

If you would like to access the website for either St Lawrence and the Church of the Ascension or for St Albans Cathedral, you can do so by scanning the QR codes below.

QR code for St Lawrence Church and The Church of the Ascension



QR code for St Albans Cathedral



Churchwardens

Richard Baldwin
(churchwarden1@abbotslangley.org.uk)

Tom Betteridge
(churchwarden2@abbotslangley.org.uk)

St Lawrence Church Abbots Langley *and*
The Tin Church Bedmond



Contacts

Vicar: The Revd Dr Peter Waddell
Tel: 01923 263013
Email: vicar@abbotslangley.org.uk

THE CHURCH OFFICE:

High Street
Abbots Langley
WD5 0AS
Tel: 01923 261795
Email: adminstlawrence@abbotslangley.org.uk
Website: www.abbotslangley.org.uk

To submit an article for Outlook, please contact the Church office.

AS PART OF THE ABBOTS LANGLEY FESTIVAL
JOHN NOONAN SINGS



FRIDAY 3RD JULY ~ 7 FOR 7.30PM

TICKETS £10 INCLUDES A GLASS OF WINE AND NIBBLES

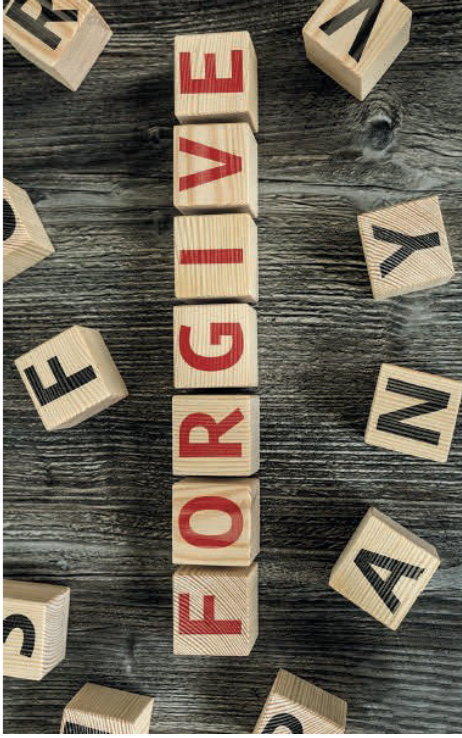
FOR TICKETS CONTACT JOHN:

07856 732 672 / jnoonan05@aol.com

OR WENDY BALL



PARKING BEHIND THE CHURCH OR AT THE VILLAGE HALL



Breathing Space

Are there limits to
forgiveness??

Sunday 7th June 5pm
St Lawrence Church

Come and join us for discussion
and refreshments



ST LAWRENCE CHURCH

COME AND SING EVENSONG

*Love choral music?
Sing with us.*

We warmly invite experienced singers with an ability to read music to join us for a special Evensong to celebrate Music Sunday 2026. Come and enjoy the opportunity to sing beautiful choral music in a church setting.

SUNDAY 14 JUNE 2026

Rehearsal 3.30pm

Evensong Service 6.00pm

ST LAWRENCE CHURCH

High Street, Abbots Langley WD5 0AS

EXPERIENCED SINGERS

with ability to read music



Refreshments
afterwards
All are welcome

INTERESTED?

Please contact the Director of Music
directorofmusic@abbotslangley.org.uk



St Lawrence Church Fete

High Street, Abbots Langley

Saturday 20th June

12.00pm - 3.00pm



Games
Tower Tours
Tombola

BBQ
Tea and Cake
Bouncy Castle
Plant Sale



The proceeds of the church fete will be donated to Watford Food Bank
and Watford New Hope

Deadline for all content for July Outlook is **Thursday 18th June**