



Outlook

January 2024

**Abbots Langley
and Bedmond
Parish
Magazine**

50p



Dear Reader

Welcome to a packed first edition of *Outlook* 2024!

We have exciting news of a new service *'The Spark'* starting on the fourth Sunday of each month at 3.30pm

in St Lawrence Church - see back page for more details. Plus lots more news and information. Happy reading!

Amanda Hawkes
Assistant Editor of *Outlook*

Bronze Eco Church Award

We are delighted to announce that St Lawrence Church has been awarded a Bronze Eco Church Award. We will

now be working towards a silver award. Watch this space!



A Rocha UK's Easy Eco Tips

Make 'enjoying nature' your priority. From bird watching, to writing about or drawing something that inspires you in nature, growing your own fruit or veg or visiting an area of outstanding natural beauty in the UK—be sure to fall in love with nature in a new way this year.

For more practical ways to enjoy, nurture and defend nature, sign up to A Rocha UK's Wild Christian email at: arocha.org.uk/wild-christian





January Calendar



REGULAR SERVICE TIMETABLE

Sunday

8am Eucharist
at St. Lawrence

9.30am Eucharist
at St. Lawrence

11.30am Eucharist at the
Church of the Ascension

Wednesday

11.15am Quiet Prayer

12.00 noon Eucharist

Monday to Saturday

9.15am Morning Prayer

WEEKLY EVENTS

*Weekly events do not
happen on a bank holiday.*

Monday 10.00am

Coffee Morning
Breakspeare Room

Monday 1.45pm

Tiny Tots
Breakspeare Room

Thursday 8.00pm

Friends and Faith Group
Breakspeare Room

Friday 10.00am

Bedmond Bells Craft and
Chat
*The Church of the
Ascension*

Friday 2pm

Craft and Conversation
Breakspeare Room

OTHER EVENTS

Saturday 6th 9.30am

Churchyard Working
Party (CWP)
St Lawrence Churchyard

Wednesday 10th 11.00am

Mother's Union
Breakspeare Room

Wednesday 10th 13.30pm

Messy Church
Methodist Church

Thursday 18th 10.00am

Bedmond Bells
Community Cafe
*The Church of the
Ascension (Tin Church)*

Thursday 18th and 25th 12.30pm

Women of the New
Testament
Breakspeare Room

Sunday 21st 5.00pm

Taizé Service
St Lawrence Church

Sunday 21st 6.30pm

Nameless
Breakspeare Room

Saturday 27th 6.30pm

Malawi Sing-A-Long
St Lawrence Church

OTHER EVENTS CONTINUED

Sunday 28th 12.30pm

Sunday Lunch
St Lawrence Church Hall

Sunday 28th 3.30pm

The Spark Service
St Lawrence Church

Dates
for your Diary



Funerals taken in December

Ann Brown





M. K. Ginder & Sons

Funeral Directors & Monumental Masons

"The Family Concern, Concerned About Families"

Serving the Community Since 1983

Since 1983, we have been looking after families from Watford and the surrounding areas at their time of need. We pride ourselves on being a local independent **family-run funeral directors** offering the **complete funeral and memorial service**.

Your local office:

ABBOTS LANGLEY OFFICE

51 High Street,
Abbots Langley
WD5 0AA

Call **01923 269994**

Email **abbotslangley@ginder.co.uk**



SELECTED
Independent
FUNERAL HOMES®
Member of Federation



Proud to offer funeral plans by

Golden Charter 
Smart Planning for Later Life

00171 3861111

M. K. Ginder & Sons is an appointed representative of Golden Charter Limited trading as Golden Charter Funeral Plans which is authorised and regulated by the Financial Conduct Authority (FRN:965279).

Further details are available on our website: www.ginder.co.uk



Abbeyfield Tannerswood

Independent living for the elderly in
Greenways,
Abbots Langley

- Your own en suite room to furnish
- A front door key to come and go as you please
- Two fresh and nutritious meals a day (plus your choice of breakfast)
- No extras to pay (except telephone)
- No worries of looking after a house
- Attractive garden to sit in
- Warm and friendly home!

To arrange a visit call the house
on 01923 263541

From £1420 per month

Charity No 265137

YOUR ADVERT TO GO HERE?

£100.00 PER YEAR FOR THIS SPACE.

EMAIL:

adminstlawrence@abbotslangley.org.uk

CITIZENS' ADVICE BUREAU

Your local CAB offers advice on a wide range of topics, including debt, employment issues, divorce and separation, state benefits, consumer queries and housing problems. All offices are now open for drop in advice and appointments. Opening times - for telephone advice:
Abbots Langley—01923 271707 Mon 10am-4pm, Tues & Thurs 10am-3pm, Wed & Fri 10am-1pm
Rickmansworth—01923 293136 Mon, Tues, & Thurs 10am-3.30pm, Wed & Fri 10am—12.30pm
South Oxhey—0208 515 8321 Mon, Tues, Thurs 10am-4pm, Fri 10am-1pm Telephone advice is available during opening times, please leave a message during busy periods. You can also call our County wide Adviceline Mon to Fri 10am-4pm on 0800 144 8848 or email via website www.threeriverscab.org.uk

From Daughters to Disciples

Some of the most meaningful encounters we read about in the New Testament involved women. From the cradle, to the cross, through to the Early Church, we encounter some remarkable women of faith. Unfortunately, many of their stories, and sometimes even names, have been overlooked and forgotten.

These womens' stories echo with the resounding theme of healing and redemption – women who sought healing, like the haemorrhaging woman who touched Jesus' cloak, or those who offered care themselves, like the woman who anointed Jesus' feet with expensive oil. These women, often marginalised in their time and in re-telling, become pivotal in teaching profound lessons of love, faith, and the transformative power of encountering Jesus. Lessons that come down to us today through their stories.

Despite the culture of the time devaluing women and placing limits on their lives, Jesus is remarkable for the ways in which he related to and valued women. From talking to, and healing women considered to be unclean, to allowing women to learn at his feet as men did and including them in his parables, Jesus consistently affirmed women's status as 'daughters of Abraham' and disciples.

What can these stories tell us about Jesus, and about our own faith journeys today? This term, our Thursday daytime group will be looking at some of these women and their encounters with Jesus and the Early Church.

What: Women of the New Testament

When: Thursdays, 12:30-2pm (bring lunch!), from 18th January 2024

Where: Breakspear Room, St Lawrence Church



Messy Church

We had an amazing December Christmas Messy Church. Dennis told the story of the nativity to the children and this was followed by our Messy Church Nativity Play. All the children had parts to play from one of the youngest who is six month olds and was an angel to Ava as Mary who is the oldest. There were lots of sheep, shepherds, angels, narrators and as many kings as we had crowns for! There were some fun Christmas crafts as well with painted Christmas trees, wooden baubles for the tree and edible baubles too! We rounded off the afternoon with our Christmas party tea and one of our Messy Church Mums, made us all pizzas as a treat!

**Our January Messy Church will be
Wednesday January 10th from
3.30 – 5.45pm**

in the Methodist Church on the High Street. Our theme will be “Making a new start” and our Bible story will be Noah’s Ark. Please let us know you are coming, contact: wendymeldrum@gmail.com or the Church Office on 01923 261795.

**All are welcome ... come and join in
the fun!**



Parish People

Linda Harris

Few of the people I have interviewed for the Outlook magazine can claim to have always lived in Abbots Langley but apart from the first three months of her life, Linda Harris can. She was born in Watford at her Nan's house, moving to Abbots when she was three months old. Both her parents worked in the print industry, her dad at Odhams and her mum at Edsons. She went to school at Hazelwood, Hillside and then Langleybury which she loved. Linda then attended Dacorum College to study shorthand and typing. On Saturdays she worked in Littlewoods which she very much enjoyed. Looking back, she doesn't know why she went into secretarial work, which she hated instead of retail which she loved. However, on leaving college she became a secretary in a flooring company in Watford.

She married Richard Harris in 1982. Richard is a member of another long-standing Abbots Langley family. His father was the local taxi driver. His late brother, David Harris was the bell tower captain at St Lawrence Church for many years and sister Betty, is a well-known figure in the village. Linda's children were born in 1984 (Rachel) and 1988 (Peter). She started to work in Martins in School Mead and then moved to Martins in Abbots Langley High Street in 1993. She has worked there for 30 years and is retiring on Jan 1st, 2024. She used to work from 6am to 6pm but now as a senior sales assistant she works from 5am to 10am. Her job is to put all the newspapers out and to book paper deliveries. She also



does the banking and any general work as required.

Linda greatly enjoyed travelling when she was younger. She has a sister in Australia and has been there four times. She has been abroad many times but now mainly holidays in the UK. She is a season ticket holder at Watford Football Club, an enthusiasm she shares with her son and belongs to a club in which she can obtain tickets to watch Arsenal when seats are available. She also looks after her three-and-a-half-year-old grandson quite a lot.

When I asked Linda what her plans were for retirement, she said that she has quite a lot of decorating to do which she hasn't had time for while working. She would still like to work a bit but not in retail anymore. Linda enjoys listening to music and watching American programmes such as Criminal Minds and other police programmes. She also likes UK detective series such as Vera and Lewis.

We wish Linda every happiness in her retirement and I'm sure that she will not miss those 5am starts!

By Brenda Southorn

John Evans KCB, FRS

On 17th November 2023 representatives of Abbots Langley History Society, Hemel Hempstead History Society, the Apsley Paper Trail, The Society of Antiquaries and family members gathered at the grave side of Sir John Evans, KCB, FRS.

John Evans was born on 17th November 1823, 200 years ago. He lived for most of his adult life in the Parish of Abbots Langley of which his home at Nash Mills was then a part.

He was the nephew, and later the son-in-law, of John Dickinson the paper manufacturer. He married the daughter of Dickinson, Harriett, who died following the birth of their fifth child.

Following Dickinson's retirement John Evans took on the running of the paper mills. During this time he extended his studies of Antiquity.

The publication of his first book, *Coins of the Ancient Britons*, in 1864, set new standards for research. Never before had the study of coins been elevated to such detailed and systematic assessment.

Without the technology of photography each coin had to be drawn by a skilled engraver.

So accurate and complete is this work that it is still used by students today.

That book would be a lifetime achievement for most people, but he went on to publish two more.

Ancient Stone Implements in 1872 and *Ancient Bronze Implements*, in 1882.

Evans was a benefactor of the British Museum and the Ashmolean Museum which was modernised in its present building by Evans son, Arthur.

Arthur was the interpreter of the ancient Minoan palace on Crete. His work remains as one of the principal tourist attractions of Greece and on the island.

John Evans had numerous awards of various kinds, Nationally and Internationally which culminated in his award in the Queen's Birthday Honours of 1882 when he was appointed Knight Commander of the Bath.

Regardless of all these honours he was still a Hertfordshire man at heart, having advised on a drainage scheme for Hemel Hempstead. He was also a Justice of the Peace, eventually becoming Chairman of the Quarter Sessions.

He served the County as Sheriff, and regularly wrote about the iniquity of taking Hertfordshire's water supply for use in London.

When Parliament established the County Councils there was dissension from proponents of the Liberty of St Albans being incorporated. Evans took the role of mediator so that the difficulties were overcome.

When the new County Council was eventually formed John Evans became its Vice-Chairman and later the Chairman.

One of the achievements which would have given him great satisfaction was becoming President of the Paper Makers Association. An organisation which he and John Dickinson had striven to create. The need for competing manufacturers to speak with

a united voice when faced with governmental dictates had been the motivation for this. From that beginning an organisation remains today which had its genesis in this achievement.

On the day of the funeral of Sir John the cortege was met at Kings Langley station by a special train from which the mourners filled the 70 or so carriages and 40 motor cars to bring them to St Lawrence.



Photograph above left taken by Stephen Danzig

Celebrating 800 years of the Nativity!

Christmas 1223, St Francis was celebrating Christmas at his hermitage in Greccio in Italy. He had to ask the Pope's permission to arrange an entirely original celebration of Christmas and build a stable near the hermitage. As darkness fell on Christmas Eve, his friars led a

procession of people, children and their animals up from the valley. The animals, mainly sheep stayed outside as the people celebrated Mass in the stable. It was said that one devoted man saw the sleeping doll open its eyes when Francis bent over the manger to bless it.

From the Vicar

Let's start the New Year with some good news!

Towards the end of December, St. Lawrence's finally caught up with the Church of the Ascension, Bedmond, and was awarded the Bronze Award in the A-Rocha Eco-Church scheme.

What on earth is that?

Well, A-Rocha means 'the rock' in Portuguese, and was the name given forty years ago to a Portugese group campaigning to place care for the environment at the heart of contemporary Christianity. That group is now an international network spanning many different countries, and its 'eco-church' scheme has become a principal way in which churches all over the world are responding to the call to take care for God's planet seriously.

Under the scheme, churches take a long look at: their worship and teaching; their management of church buildings; their management of church land; the way in which they engage with ecological issues at the local, national and global levels; and how their members' lifestyles can become more friendly towards the earth. So, for instance, you might start to see articles in a parish magazine (or even a sermon or two) drawing the links between Christian faith and care for the planet. You'll see us taking ever more care about how our buildings are heated and powered, over what lives in the churchyard, and even over what kind of loo paper we use. You might be prompted to think about reducing your



car use or your meat consumption as in part a spiritual question, not just a financial one.

Of course, nearly all churches do all of this to *some* degree, and frankly it wasn't

too hard for us to gain the Bronze Award (though kudos to Bedmond for getting there first!). However, in our Mission Action Plan for the next three years, we have set ourselves the target of achieving the Silver Award. Now, that *will* be quite a challenge. Brace yourself for hearing a lot more about all this, seeing the parish do more, and maybe even getting involved personally.

But someone might ask: What has any of this to with the Gospel? Why is all this eco-stuff any business of the Church?

One answer to which is to say that if you uncover the long-term historical roots of our current ecological crisis, you find that Christianity bears a certain degree of responsibility for where we've ended up. Only a degree, and of course there are many other factors besides Christianity in play. However, *part* of why we are where we are comes down to how the Bible has been read – or conveniently misread – for very many years.

Genesis 1:26 is at the heart of it all: 'Then God said, "let us make humankind in our image, according to our likeness, and let them have dominion over the fish of the sea, and over the birds of the air, and over the cattle and over all the wild animals of

the earth, and over every creeping thing that creeps upon the earth.” Especially since around the year 1700, the word translated here as ‘dominion’ has been taken to mean that human beings are the owners of the planet and everything in it, *and* that they can do pretty much whatever they want with it. All the other creatures belong to us and can be used for our ends. There is no particular need to protect or respect them. You can cut them up and experiment on them. You can devastate their habitats and their foodchains, you can behave as if they don’t matter – because, compared to humans, they don’t. Thus religion gave sanction to much of the havoc wreaked on nature for the last three hundred years.

And yet, the original Hebrew word underlying ‘dominion’ doesn’t really carry that sense of untrammelled ownership-power over things. Yes, there is a sense in which human beings are set apart from and over the rest of creation – to that extent, tension with some of the more radical recent ecological thought will remain inevitable. Yet that apartness and authority is to be exercised *for the good* of the rest of creation. Humans are rather like gardeners (as indeed Genesis 2 says the first ones were): their role is to care for the other creatures in such a way that all get to flourish. There is no licence for exploitation and plunder here. In our relationship with the planet, as much as in our relationship with each other, what we need to do is learn how to love and serve.

Global Christianity, not before time, is re-learning this lesson. What would it look like to be people who loved the planet? Around whom the natural world

was able to flourish? What would that mean here, in Abbots Langley and Bedmond? As we journey towards the Silver A-Rocha Award, we’re going to find out. Watch this space!

Peter

The A-Rocha vision – ‘the world we want to see’:

A world of stable climate and abundant nature, where oceans, rivers, air and soil are free of human pollution.

Where human society lives in balance with the rest of nature and protects the Earth’s natural systems which sustain all life.

Where all people and communities have access to healthy nature locally.

Where the church worldwide understands the biblical mandate to care for all of God’s creation as a core part of its mission, and manifest this in how it treats its land, buildings, investments and other assets.

Where Christians play their full role, in collaboration with others, to protect and enhance the diversity and abundance of life on Earth, and to restore and maintain the health of our planet’s life sustaining systems.

And where, through churches and Christians adopting a right relationship with the rest of creation, others are drawn to a closer, life-giving relationship with our Creator God.

Situations Vacant ...

‘Ask not what God can do for you, ask what you can do for God!’

Well, what you can do for the parish and for God aren't *exactly* the same thing, I suppose, but there are some vital things that need doing which you just might be the right person for. The beginning of a New Year is a great time to think about how you might get more involved. For instance....

Could you be a helper at **Tiny Tots**? We're regularly getting in more than fifteen toddlers, with their parents and carers every week. We teach them songs, we tell them stories and it is wonderful ... but we need help. Especially, we need one or two people to help make drinks and chat with the adults, and to help tidy up afterwards. It would take just over an hour a week, if you did it every week – if there's more than one volunteer it could easily be done on a rota.

Could you be part of the **Breathing Space team**? This has become a great fixture in the church's life, allowing people to get to know each other better and dig deep into some fascinating questions – but it takes a lot of doing! Do you have brilliant ideas for themes? Can you give some practical help with shifting chairs or making refreshments? Is publicity your gift? Giving maybe three hours a month would make a great contribution to Breathing Space continuing to flourish.

We still need **Bereavement Visitors**. The title might sound a bit scary, but all it means is that we need nice, friendly people who can cope with other people's grief, and who are good at

listening. That's the essential qualification, and we know you're out there! Whatever more training is needed will be given, and for maybe three hours a month you'll be doing something which will bring comfort and help to people in great need.

Friends of St Lawrence

The Friends have had a very busy build up to Christmas! We had our Friends and Mothers' Union coffee morning at the end of November and as we write, we are looking forward to our Christmas Wreath Festival on the weekend of December 16th/17th.

Our coffee morning was a great success with lots of people coming along to try out our famous bacon and sausage butties! There were cakes, raffles and plenty to buy for those last minute Christmas presents.

Thank you to all those who worked so hard to make it happen, especially to those in the kitchen making the coffee and butties! A huge thank you to everyone who came along to support us, it was wonderful to see so many there and we made just under £800 during the morning which is an amazing result. Thank you all!

Musical opportunities at St Lawrence

Music plays a big part at St Lawrence Church. If you are interested in finding out more contact Director of Music, Marianne Ryall. Email: directorofmusic@abbotslangley.org.uk

Bedmond Bells WI

Although it seems to have been mostly cold and grey recently, we have been keeping ourselves cheerful with various activities.

A group went on a return visit the Organ Museum in St Albans, where they were entertained to a Christmas Afternoon Tea in good company. It brightened up the damp and dull afternoon, and everyone thoroughly enjoyed themselves.

Our December meeting was livened up by the 'Jolly Jazzers', a local amateur entertainment group who, along with a light buffet and drinks, made our last meeting a fitting end to our year's activities.

In January we begin our 2024 programme with a talk from a representative of the CT Scanner Appeal at Mount Vernon Hospital. These machines are vital for the speedy and accurate diagnosis of cancers, require updating and replacement to keep pace with scientific research and to enable them to be available for those that need them. We hope that our local PCSO will also be able to pop in to talk to us on keeping safe in this day and age. The meeting will be held on Friday 12th January, at Bedmond Village Hall, and as always visitors are very welcome. The meeting starts at 7.30pm.

After a Christmas break the Friday morning Craft Group in the Tin Church will start again on 5th January, from 10.00am to 12.00pm. Everyone is welcome to join us.



Lastly, we are trying a new venture, a Community Café in the Tin Church on Thursday 18th January from 11.30am to 1.30pm. Come and join us for home-made soup and a roll, tea and cakes and company and conversation.



For further information contact –
Christine Hunt – President
christineehunt@gmail.com or 01923 573236
Moira Bunting – 01923 262242
BedmondBellsWI@yahoo.com
Facebook: BedmondBellsWI

Mothers' Union

Thank you to everyone who supported the coffee morning which we shared with the Friends of St Lawrence we raised £380 for Mothers Union projects at home and abroad.

We are starting the New Year with a New Year Lunch.

10th January: 11.00am coffee and chat, 12.00pm Corporate Communion, 13.00 New Years Lunch at Royal Oak Branch
Leader: Jill Matthews 01923 262046
matthewsjill2410@gmail.com

**Local Independent
Funeral Directors**
Working for Local People



J & S Funeral Service is committed to providing professional, compassionate and dignified funeral services at very competitive prices. Our funerals can be tailored to suit individual requirements, from the more elaborate cortege with horse drawn hearse to a simple eco funeral, and all receive the same high level of personal service and attention to detail.

We provide:

- ♦ a personal and professional 24 hour service;
- ♦ accessible office with car parking at front of premises;
- ♦ a private Chapel of Rest;
- ♦ funeral services for the whole of the West Herts area;
- ♦ services for all faiths and denominations;
- ♦ home arrangements, if preferred;
- ♦ Golden Charter pre-paid funeral plans;
- ♦ motor and horse drawn hearses;
- ♦ floral and monumental tributes.

17 School Mead, Abbots Langley WD5 0LA
Tel: 01923 262939 (24 hours)



Phil Davis

Professional, independent advice
for all your holiday and travel needs
ABTA Bonded ~ ATOL Holder

Tel: 01494 415010

phil.davis@thepersonaltravelagents.co.uk

YOUR ADVERT TO GO HERE?

£100.00 PER YEAR FOR THIS SPACE.

EMAIL:

adminstlawrence@abbotslangley.org.uk

Penny Waterman School of Dance

Children's Ballet Classes



In St Lawrence's Church Hall, Abbots Langley
for ages 2 to 6 years
Saturday mornings
9.00 – 9.30am Ages 2 & 3 years
9.40 – 10.10am Ages 4 – 6 years

Tel: 01727 858632

Email: pwsd@pennywaterman.com

www.pennywaterman.com

**YOUR ADVERT TO GO HERE?
£50.00 PER YEAR FOR THIS SPACE.**

EMAIL:

adminstlawrence@abbotslangley.org.uk

**YOUR ADVERT TO GO HERE?
£50.00 PER YEAR FOR THIS SPACE.**

EMAIL:

adminstlawrence@abbotslangley.org.uk

Abbots Langley Gardening Society

www.algs.org.uk

FOR ALL YOUR GARDENING NEEDS

Shop open all year, monthly Social Evenings
Newsletters, Outings, 2 Shows, discounted seeds

CAN YOU AFFORD NOT TO JOIN?

Jane Lay (Sec) - 01923 447281

GARSTON TV & RADIO
FOR ALL YOUR DOMESTIC ELECTRICAL
SALES, SERVICES & REPAIRS

YOUR LOCAL EURONICS DEALER

74 HIGH STREET, ABBOTS LANGLEY

Tel - 01923 263738

Meeting Rooms for Hire

Church Hall (Fully equipped kitchen)

Breakspear Room (Basic kitchen facilities)

Church of the Ascension (Basic kitchen facilities)

PARISH DIRECTORY

The code 01923 precedes all the telephone numbers unless stated otherwise

Abbeyfield (West Herts) Society	Marcus Coultrup (334387)
Bedmond Bells WI	Janette Noonan 01923 266921 or Moira Bunting 01923 262242
Bedmond Village Carpet Bowls	Margaret Forrest (670989)
Bedmond Village Hall	Simon Smith (07401 331302)
Bedmond Village Taskforce	bedmondvillagetaskforce@gmail.com
Bell Ringing	Phill Higgs (440676)
Bowling Club	off Langley Road (alongside the Scout HQ)
Breakspeare Community Pre-School	(by Tannerswood School) (274483)
Brownies, Rainbows and Guides	www.girlguiding.org.uk/interested
A/L Carers and Former Carers Support Group	Brenda Southorn 677139
Churches Together	Brenda Southorn 677139
Citizens Advice Bureau	(08444 111444) - see advertisement on page 4
Community Centre	(to hire 07530 266293)
Cricket Club	www.abbotssc.hitssports.com
Evergreen Youth FC	Ian Turner (266640)
Family Planning	Garston Clinic (234525) Mon & Wed 6.00 – 8.00 pm
Flower Arrangement Society	Sylvia Clinton (262678)
Friends of St Lawrence	Bill Sanderson (265963) / Wendy Meldrum (07710688633)
Gardening Society	Jane Lay (447281)
Gilbert & Sullivan Society	Brenda Southorn (677139)
Hillside Residents Association	School Mead (261734)
Home Start (Helping Families Under Stress)	(248010)
Infant Welfare Clinic	St Saviour's Hall - Monday 1.30 to 3.00 pm (264639)
Jo Jingles	Mags Bilson (222529)
Karate Club (Junior)	(Scout HQ, Langley Road) Andrew Lewry (07774 161685)
Library	Open: Mon & Thu 1.00pm-6.00pm; Tue & Fri 9.30am-6.00pm Sat 9.30am - 1.00pm; Wed & Sun closed all day
Local History Society	Delva O'Reagan (267585)
Mothers' Union	Jill Matthews (262046)
Orchestra (ALO)	Penny Abbot (01442 873205)
Parent & Toddler Group	Community Centre; Tue, Wed & Friday 9.15-11.15 am
Parish Council and Halls	Council Office, Langley Road (265139)
Players (ALP)	Jean James (461549)
Red Cross	Jeanne Johnson (263598)
Royal British Legion	Secretary: Chris Driscoll (01923 675563)
St Lawrence Church Hall	Church Office (261795)
St Lawrence Church Flower Arrangers	Church Office (261795)
Scouts: Abbots Langley Scout Group	Alison Redmond gsl@abbotslangleyscouts.org.uk
Langleybury Scout Group	5thnwscouts@gmail.com
Youth FC	Tim Denyer (270563)

GPS PRINTWORKS

We have moved to:
Unit 7 Mowat Industrial Estate
Watford WD24 7UY



For all your printing needs....

Tel: 01923 242128
Kevin: sales@gpsprintworks.co.uk
Lea: studio@gpsprintworks.co.uk

An Unkindness of Ravens and A Murder of Crows

The collective noun for a group of Ravens is an Unkindness of Ravens which is sort of strange as ravens are often solitary birds or found in pairs. The collective noun for crow is rather sinister and is a Murder of Crows.



Crow

Have you seen or hear the ravens that we now have in the churchyard? It took many months for me to work out they were ravens and not crows. The call is very different and I just thought we had a crow with a sore throat. We tend to associate ravens with the Tower of London but actually they are found all over the world and are one of the most widespread birds found in major portions of North America, Europe, Asia, and North Africa, and in all major habitat types except tropical rain forests. Like crows they are part of the 'Corvid' family including crows, Jays and Magpies. We have these birds visiting the churchyard as well.



Raven

Ravens are scavengers and will eat almost anything including carrion, small animals, birds as large as pigeons and eggs, a variety of insects, fish, grains, buds and berries and food left lying about by humans. They generally have few predators just Eagles, Hawks and Owls.

How do you tell the difference between crows and ravens? These are the things you can consider - the size of the bird, shape of the tail feathers, the smoothness of the bird's neck, the birds' sound and how the birds socialise.

Both ravens and crows are completely black but the raven is lightly larger and ravens have longer tails, the feathers in the centre of the tail are significantly longer, creating a distinctly pointed wedge, diamond or V-shaped. The crows have a fan shaped tail. I have also alluded to the fact that their call is very different with a much hoarser call. I think this is the easiest way to tell them apart. Ravens have black, larger, thicker, curved and more powerful beaks. The beak of a crow is weaker smaller and mostly flat. The feathers of ravens are generally shiny with a wet sheen. The feathers of a crow are less shiny and may have lighter markings. Ravens have shaggy feathers around the throat and above the beak. The crow has a smooth throat with relatively short feathers. Generally ravens live in forests and mountainous areas and build their nests high on the cliff edges or in trees.

(Continued on page 17)

(Continued from page 16)



Crow



Raven

The ravens in the churchyard are often seen in and around the large redwood – the tallest tree in the churchyard. Crows are usually in larger groups rather than on their own or in a pair.

As you walk through or sit for a while on a bench in the churchyard listen out for the crow with the sore throat and look up – you will see the raven.

By Carol Higgs

QR Codes

If you would like to access the website for either St Lawrence and the Church of the Ascension or for St Albans Cathedral, you can do so by scanning the QR codes below.

QR code for St Lawrence Church and The Church of the Ascension



QR code for St Albans Cathedral



Churchwardens

Carol Higgs
(churchwarden1@abbotslangley.org.uk)

Tom Betteridge
(churchwarden2@abbotslangley.org.uk)

St Lawrence Church Abbots Langley and
The Tin Church Bedmond

To submit an article for
Outlook, please contact the
Church office.



CONTACTS

Vicar: The Revd Dr Peter Waddell
Tel: 01923 263013
Email: vicar@abbotslangley.org.uk

Curate: The Revd. Helen Neville
Mobile: 07718 172642
Email: curate@abbotslangley.org.uk

THE CHURCH OFFICE:

High Street
Abbots Langley
WD5
Tel: 01923 261795
Email: adminstlawrence@abbotslangley.org.uk
Website: www.abbotslangley.org.uk

Malawi Project

Our next fundraising event will be:

**SING – A – LONG
to the Sound of Music
Saturday 27th January at 6.30pm**

This will be in St Lawrence Church Hall. Come along and enjoy a singing along to a great musical. There will be light refreshments; BYO drink. Why not dress up and get into the zone!!

Contact: wendymeldrum@gmail.com
or the Church Office on 01923 261795

VISIT TO MALAWI: MAY 2024

We are now making the final bookings for our trip to Malawi in May 2024. There will be 8 of us going this time and as I write, we have just booked our airline tickets for the trip. We have already booked our accommodation ... we will be staying at Chilema Conference Centre which is where we stayed last time and we will have the use of the Malosa Secondary School bus so we can get about whilst there. The visit all seems very real now!

There are several reasons for making our trip. Firstly, we will be renewing friendships with the people we met in Malosa during our last visits. We will find out how life is for them ... how they have been affected by the Covid pandemic and more especially how they have survived the hurricane that hit them early in 2023. We will visit the projects we have supported to see how they are progressing. We will take pictures and ask about progress so far so we can report back to our supporters.

We will visit nurseries, schools and community projects to find out what needs there are and how we can support them going forward. And of course, there will be work to be done in the hospital whilst there!

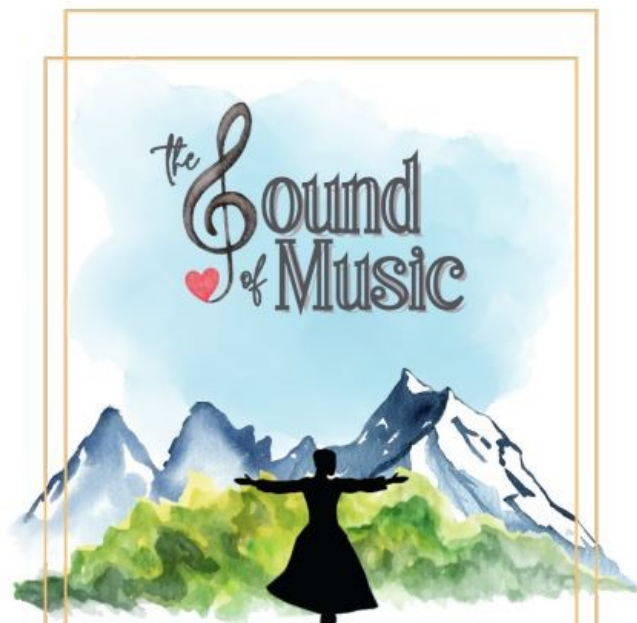
In preparation for our visit, we will be collecting items for the nurseries, school and hospital as we did for our previous visits. In the New year, we will be contacting the Hospital Health Care Co-ordinator and the Headmaster to see what is needed and what is practical to take in our suitcases.

If you would like to do some knitting during these dark winter months, there is always a need for children's knitted jumpers ... all sizes from 0 – 5 years old. We can provide patterns for you but if you have some favourite ones, they will be fine. If you are interested in knitting animal puppets for the children in the nurseries, once again, there are patterns we can provide. For patterns or more information, please contact Wendy Meldrum:
wendymeldrum@gmail.com

It is an exciting time for us as we prepare for our visit and we would like to take this opportunity to say thank you for all the support you have given the Malawi Project.



SING · A · LONG



SATURDAY 27TH JANUARY

6.30PM

ST LAWRENCE CHURCH HALL, ABBOTS LANGLEY
LIGHT REFRESHMENTS SERVED

IN AID OF THE MALAWI PROJECT

Contact: wendymeldrum@gmail.com or

Church Office 01923 261795

A new service starting January 2024!

The Spark @ St Lawrence's



You're Invited!

Whether you've never been to church before, or are an old pro, you are so welcome at our monthly informal afternoon service.

The Spark is a service for people of all ages. We run activities for kids, space for adults to explore faith, and a chance to meet new people.

Join us on the last Sunday of the month, 3:30pm for drinks and snacks, with the service starting at 4pm.

What: The Spark

When: Last Sunday of the Month, 3:30pm

Where: St Lawrence, Abbots Langley



Deadline for all content for February Outlook is Monday 22nd January