



Outlook

January 2026

**Abbots Langley
and Bedmond
Parish
Magazine**

50p



Dear Reader

Welcome to the very first issue of Outlook 2026!

There's lots in store for the parish this year, with a wide range of events and services planned throughout 2026.

Outlook will keep you up to date as they come around, so you can easily add them to your diary.



Wishing you a joyful, calm, and hopeful New Year — and, as always, happy reading!

Amanda Hawkes
Assistant Editor of Outlook

Children's Christmas Craft Workshop

On Saturday 14th December, St Lawrence Church was buzzing with Christmas cheer as 40 children gathered for a wonderfully festive Christmas Craft Workshop! The church was filled with creativity and laughter as the children enjoyed a whole host of seasonal activities, from making hot chocolate reindeer gifts to handmade cards, bookmarks and sparkling tree decorations. The highlight for many was creating Christingles, which were proudly handed out at the Christingle service the following morning. The afternoon also included a reading of the Christmas story as well as some lovely refreshments for the children and adults.





January Calendar



REGULAR SERVICE TIMETABLE

Sunday
8am Eucharist
 at St. Lawrence
9.30am Eucharist
 at St. Lawrence
11.30am Eucharist at
 the Church of the
 Ascension

Wednesday
12.00 noon Eucharist

Monday to Saturday
9.15am Morning Prayer

WEEKLY EVENTS

*Weekly events do not
 happen on a bank holiday.*

Monday 10.00am
 Coffee Morning
Breakspeare Room

Tuesday 10.30am
 Tiny Tots
Breakspeare Room
 (Term time only)

Thursday 8.00pm
 Friends and Faith Group
Breakspeare Room

Friday 10.00am
 (from 9th January)
 Bedmond Bells Craft
 and Chat
*The Church of the
 Ascension*

Friday 2.00pm
 Craft and Conversation
Breakspeare Room

OTHER EVENTS

Saturday 3rd 9.30am
 Churchyard Working
 Party (CWP)
St Lawrence Churchyard

Wednesday 7th 10am
 Coffee Morning
The Tin Church

Wednesday 7th 2pm
 Compassionate Café
Breakspeare Room

Sunday 11th 5.00pm
 Choral Evensong
St Lawrence Church

Wednesday 14th 11am
 Mother's Union
Breakspeare Room

Wednesday 14th 3.30pm
 Messy Church
Methodist Church

Sunday 18th 1pm
 Christmas Sunday Lunch
*St Lawrence
 Church Hall*

Sunday 18th 5.00pm
 Taizé Service
St Lawrence Church

Sunday 18th 6.30pm
 Nameless Youth Group
Breakspeare Room

Sunday 25th 3.30pm
 The Spark Service
St Lawrence Church

Saturday 31st 6pm
 Malawi Sing a Long
St Lawrence Church Hall

Save
 the
 Date

Answers to quiz on page 8

1. Paddington
 2. Wimbleton
 3. Angel
 4. Seven Sisters
 5. Holland Park
 6. Royal Oak
 7. Knightsbridge
 8. Swiss Cottage
 9. All Saints
 10. Oxford Circus
 11. Greenwich
 12. Canning Town
 13. Cutty Sark
 14. Baker Street
 15. King's Cross
 16. Oval
 17. Arsenal
 18. Morningside
 19. Old Street
 20. Sloane Square
 21. Grange Hill



M. K. Ginder & Sons FUNERAL DIRECTORS

"The Family Concern, Concerned About Families"

Serving the Community Since 1983

Since 1983 we have been looking after families from Watford and the surrounding areas at their time of need. We pride ourselves on being the Local Independent **Family-Run Funeral Directors** offering the **Complete Funeral and Memorial Service**.



GOLDEN CHARTER
FUNERAL PLANS



M K Ginder Limited trading as M.K. Ginder & Sons Funeral Directors is an appointed representative of Golden Charter Limited trading as Golden Charter Funeral Plans which is authorised and regulated by the Financial Conduct Authority (FRN:965279).

**Call Us Now
for your free
Funeral Plan
brochure**

51 High Street
Abbots Langley
WD5 0AA

Tel: 01923 269994

**Or we can make the
arrangements at your home
at a time that suits you.**

Further details are available on our website: www.ginder.co.uk



Contact Us:

07852 146857


LITTLE FAWNS
Preschool & Forest School
St Lawrences Church Hall
Abbots Langley

**15 & 30 hour
Childcare Support
Funding available
for 2, 3 & 4 year
olds**

**For children
age 2-5 years old
Open 8am -
4.30pm
Monday - Friday**

**Shared care
available with
Abbots Langley
School Nursery
& local
Childminders**



[www.littlefawnspreschool.co.uk/
abbots-langley](http://www.littlefawnspreschool.co.uk/abbots-langley)

**citizens
advice** **Three
Rivers**

Your local office gives advice on a wide range of topics including debt, employment, relationship breakdown, benefits and consumer and housing issues.

Current opening times as below. Please see our website for email enquiries and full details of our service:

www.threeriverscab.org.uk

Abbots Langley: 01923 271 707 Mon 10 - 4, Tues & Thurs 10 - 3, Wed & Fri 10 - 1
Rickmansworth: 01923 293 136 Mon, Tues & Thurs 10 - 3.30, Wed & Fri 10 - 12.30
South Oxhey: 0208 515 8321 Mon to Fri 10 - 4, Wed specialist appointments only
County wide Adviceline: 0800 144 8848, Mon-Wed 10am - 9pm Thurs & Fri 10am to 8pm Saturday -10am to 4pm.
This number also uses Relay UK, type in 18001 then 0800 144 8848

Messy Church

We had a brilliant and very busy December Christmas Messy Church with lots of families attending. As it was Christmas, we heard the story of the nativity and this was followed by our very own Messy Church Nativity Play. All the children had parts to play with angels and kings being the most popular! There were some fun and very messy Christmas crafts as well with a glitter (eco friendly!) angel for the Christmas tree, a candle cleverly made from a toilet roll and a model nativity scene. As ever, the food craft was one of the favourites which was a Christmas Tree made out of a chocolate cake with green icing and silver balls! We rounded off the afternoon with our usual Christmas party tea.

**Our January Messy Church will be
Wednesday January 14th from
3.30 – 5.45pm**

in the Methodist Church on the High Street. Please let us know you are coming contact:
wendymeldrum@gmail.com
or the Church Office on 01923 261795.

**All are welcome ... come and join in
the fun!**



Parish People

Janet was born in Acton, West London – the house is still there. Her father worked for his father in the family business, fret cutters for furniture. When Janet was 3 the family moved to Ferring on Sea in Sussex. Her father had bought a newsagent/tobacconist shop and her mother helped in the shop. In 1940 Janet's grandmother came down from London for a holiday and didn't go back. She took over the cooking and housework and helped look after Janet and her brother who was 5 years older. Janet's first school was an evacuee school in the village hall at 4 years old. She then attended a small private school before going to Junior School in West Worthing. Janet said that all she learned there was poetry and dancing. Her Senior school was the Davison School in Worthing which she left at 14, moving on to Brighton Secretarial College.

At a New Year's Eve dance in the village hall, she met her friend's cousin Frank who was in the RAF. Janet was 18 years old. She and Frank got engaged in 1955 and subsequently married. Frank was then posted to Singapore. This was a big adventure, and she travelled there in a troop ship with other wives. They were there for 2 years and Janet was very home sick to begin with. Eventually she got a job with a solicitor as a secretary. She and Frank returned to Singapore 25 years after they had been stationed there and returned again later. When they came back from Singapore Janet was pregnant with her first daughter and went to live with her parents back in Ferring. She then lived in married quarters at Heath



and Reach near Leighton Buzzard when Frank was stationed at RAF Stanbridge. After Frank retired from the RAF in 1962 he got employment in Cricklewood and their second child, a son, was born at the RAF Hospital, Halton and their third child, a daughter, was born in King Street Nursing Home, as by then the family had moved to Watford.

After the children were at school Janet worked at Rolls Royce and was then Assistant Cook at Nascot Wood School for 6 years. She then decided to go back to secretarial work and got a job with George Kuikka in Leavesden. After living in Leggatts Way for 3 years the family moved to Comet Close. Janet saw an advert in the Watford Observer for a Secretary to the Registrar at Trewins (John Lewis) and worked there until her retirement. After her retirement Janet volunteered at the Blind Centre for many years and received an award for Voluntary Service during the Queen's Diamond Jubilee Year. She was also a Trustee of Gosling Homes in Cassio Road, acting as Clerk. In 1990 they moved to Tibbs Hill Road and attended St Lawrence Church, finally moving to Breakspear Court in 2016. Sadly, Frank died just over a year ago. *Continued on page 7...*

Continued from page 6...

Janet has enjoyed a variety of interests and activities during her life. She went to ballet and tap classes in the village hall when she was young and joined the local amateur dramatic society. She remembers being in Ali Baba and the 40 Thieves and performing in lots of concerts to entertain the old people. She also remembers playing Happy in Snow White and the Seven Dwarfs with welly boots and a beard! In 1953, at nearly 18, she and her brother and two friends went up to London for the Coronation. They stood in The Mall all night and had a wonderful view of the procession.

She has travelled far and wide. As mentioned, they went to Singapore twice but also to India and Pakistan and the USA three times and to visit Frank's sister. Janet enjoyed sewing and making dresses. She is very interested in History, particularly Royal History and Family History and is also an avid reader making full use of the local library and belonging to a book club. Janet celebrated her 90th birthday last June and one of her presents was a family trip back to the Worthing area where she had grown up and where she had met Frank, reliving many happy memories.

Brenda Southorn

Mothers' UNION

In December, we had Meditation with reflections on the Advent Antiphons from a book put together by David Hoyle, 'O Come, Emmanuel', with wonderful illustrations of Korean origin - a book we would recommend - for Advent next year!

We meet next on Wednesday 14th January for a catch up and a discussion entitled 'Money, Money, Money!', at



11.00am in the Breakspear Room followed by Communion in church at 12.00noon.

Financial exclusion: banks are disappearing, cash is used less and less, and many are shopping on-line – but what effect is this having on different ages in our community – and beyond?

Good wishes to all our members for 2026 - and reminder that our subs are due - £39.50 for 2026 – please ask for bank account details if you wish to pay on-line, or bring a cheque or cash to the meeting.

Contact Pam Rastall for further details - pamrastall@live.co.uk

Underground Quiz – Just for fun

Can you identify these stations from the clues given:

1. End of line for a bear.
2. Anyone for tennis?
3. Heavenly chorister.
4. A large family.
5. A tulip garden?
6. Monarch's hiding place.
7. Crossing for spurred gents.
8. A modest chalet.
9. Following Halloween.
10. Varsity show.
11. In the meantime go to the borough.
12. Place to preserve food.
13. Conveyor of tea.
14. Sleuths' abode.
15. Royal displeasure.
16. Nearly circular.
17. Arms a-plenty.
18. Broadcast strange game.
19. Elderly thoroughfare.
20. Quadrilateral for posh rangers.
21. Comprehensive saga on the box.
22. A high school.

(Answers on page 3).



Subscription Renewal

Thank you to all those who have already renewed your subscription to Outlook. If you have not yet done so this is a gentle reminder that it is now due. We would like to wish all our readers and advertisers a very Happy New Year.

Outlook is a great way to keep in touch with all the things concerning St Lawrence and The Church of the Ascension Bedmond. If you can renew by BACs it would be appreciated, but we understand that is not possible for everyone. If you *can* renew by sending the money straight into the bank account then these are the details:

Sort code:- 30 99 21

Account no:- 01540225

Account Name:- The Parochial Church Council of the Ecclesiastical Parish of St Lawrence Abbots Langley

Cost is £6 for the whole year or £17.50 if you need us to post it to you.

If however your preferred option is to pay in cash please can you drop the money into the church office in an envelope marked with your name and address, marking it Outlook or you can post into the wall safe in church, again in an envelope marked with your name and address.

If you were not on the list for 2025 but would like us to deliver it to you during 2026 please contact the church office so we can add you to the lists of those who have it delivered.

Thank you.

Children's Corner



Create a Picture with Garden Stones!



Items needed:

- Find 10-12 small stones
- some paper or card
- a pen or pencil
- and a camera/phone to record your masterpiece

How to.....

- Choose some small stones from your garden or during a walk – smooth pebbles and flat stones are best - choose about 10 or 12 to start.
- Wash the stones to remove any mud so they are clean to handle and lay them out in a box or on a tray so you can see them all.
- Think of the shape of an animal or a person – do you have stones that could be the main body parts?
- Choose these stones and lay them on the paper or card.

What do you think they could be?

- Now add lines around the stones to complete the drawings: Twigs and leaves can also be added if you like.
- Take a photograph of your masterpiece and then you can start again with a new piece of paper or card.
- Or, if you want to keep the stone pictures you will need to ask an adult to help you use strong glue to stick them down.

Here are some ideas for you - Have Fun!!!



From the Curate

A few months ago, in an all-age sermon, I found myself talking about Captain America. From the outside, it might seem odd to reflect on theology through superhero films. But Christians have always paid attention to the stories a culture tells itself. Popular films don't just entertain us; they shape our imagination about good and evil, power and weakness, life and death. The Marvel Cinematic Universe, watched by millions across the world, offers a particularly rich example. Its long-running "Infinity Saga" invites us to think about sacrifice, violence, and the cost of redemption — themes that sit very close to the heart of the Christian faith.

Superhero films are often dismissed as pure escapism: colourful costumes, spectacular explosions, and clear-cut battles between good and evil. But every so often, popular culture gives us something richer — stories that invite us to think more deeply about who we are, what we value, and how we decide what is right. The Marvel Cinematic Universe (MCU), particularly its long-running story known as the *Infinity Saga*, is one such example.

The Infinity Saga stretches from *Iron Man* (2008) to *Avengers: Endgame* (2019), following a loose but coherent narrative across more than twenty films. At its heart is the villain Thanos, who seeks to collect six "Infinity Stones" that would allow him to wipe out half of all life in the universe. His justification is chilling but familiar: resources are limited, populations grow too large, and — in his view — mass death is the only way



to save what remains.

For all its cosmic scale, the saga repeatedly returns to one very human question: **what are we willing to sacrifice?**

Sacrifice has always been central to superhero stories. Heroes are defined not just by strength or intelligence, but by their willingness to give themselves for others. In many cases they narrowly escape death, allowing the sacrifice to be repeated again and again. But in the final films of the Infinity Saga, sacrifice becomes unavoidable and deeply costly.

In *Avengers: Infinity War*, the heroes face a dreadful dilemma. They realise that stopping Thanos may require killing one of their own: Vision. Vision himself is willing to die, but Captain America and others resist fiercely, repeating the line, "We don't trade lives." This reflects a moral instinct many of us share — that deliberately killing an innocent person, even for a good outcome, feels profoundly wrong.

This stance is sharply contrasted with Thanos himself. In order to gain one of the Infinity Stones, he sacrifices his adopted daughter, Gamora. She is unwilling, terrified, and betrayed — and yet Thanos insists that this act proves his moral seriousness. In his mind, the end (saving the universe) justifies the means (murdering the one he loves most).

Here the films do something surprisingly subtle. Thanos is not portrayed as someone who enjoys cruelty. He genuinely believes he is

right. His desire — a balanced, sustainable universe — might even sound noble. But it is a distorted desire, a good end pursued in a deeply wrong way. His sacrifice is not self-giving love, but violence dressed up as necessity.

By the time we reach *Avengers: Endgame*, the moral landscape has shifted. The heroes have failed. Half of all life is gone. Grief, guilt, and despair hang over everything. And the repeated line changes. No longer “We don’t trade lives,” but: “Whatever it takes.”

Two major sacrifices define the film. The first is Tony Stark, whose final act saves the universe at the cost of his own life — a fitting conclusion to his long journey from self-absorbed weapons dealer to self-giving hero.

The second, quieter but equally significant, is the death of Natasha Romanoff (Black Widow). At first glance, her death is troubling. As the only woman among the original Avengers, killing her off can feel disappointingly predictable. Yet the way her sacrifice is portrayed matters. Unlike Gamora, Natasha chooses her death. She fights to ensure that she, rather than her best friend Hawkeye, is the one who dies. Her sacrifice is conscious, willing, and motivated by love.

Jesus’ words in John’s Gospel come to mind: “*No one has greater love than this, to lay down one’s life for one’s friends.*” Natasha’s death is not about achieving a “greater good” at any cost. It is about freely giving herself so that others may live.

And yet, a problem remains. For all its thoughtful moments, the Infinity Saga

almost always resolves conflict through violence. Punches are thrown, cities collapse, enemies are destroyed. The theologian Walter Wink described this pattern as the “myth of redemptive violence” — the belief that violence is ultimately what saves us.

This myth is powerful precisely because it feels so natural. When faced with evil, violence appears to be the only realistic response. Interestingly, in the MCU, the heroes rarely even attempt to reason with Thanos or expose the flaws in his thinking. Violence is simply assumed to be the answer.

At the same time, the films show some awareness of the danger. Again and again, villains believe themselves to be saviours. The line between hero and monster becomes thin. The question hangs in the air: **can we overcome evil without becoming like it?**

For Christians, these films offer both resonance and challenge. The MCU is not an overtly Christian universe — gods are aliens, and prayer is largely absent — but it is haunted by Christian ideas. Sacrifice matters. Love that gives itself for others is portrayed as morally beautiful. And there is a clear distinction between violent sacrifice imposed on others and self-giving sacrifice freely chosen.

The Infinity Saga does not give us perfect answers. But perhaps that is its value. It opens up space for reflection. It invites us to ask where we place our trust: in power, force, and “whatever it takes” — or in the risky, costly love that gives itself away. And in a world still captivated by heroes, that question might matter more than we realise.

Helen

South Porch and Drains

Thank you to everyone for your patience whilst we have been working on improving the drainage around the church and redecorating the South Porch. The work on the drains is now complete. We are very grateful to the National Churches Trust who have agreed to give us a grant of £3000 towards the cost of the drainage and to the Friends of St Lawrence who have also contributed a considerable sum towards these two projects. More details to follow from Friends of St Lawrence.

In the meantime this is taken from the National Churches Trust website:

Every year we help hundreds of churches, chapels and meeting houses to stay open, helping to save precious heritage and keeping churches at the beating heart of local communities.

Churches are impressive, exciting and surprising places.

We believe they should be loved and supported.

Working together with churches in England, Wales, Scotland and Northern Ireland, we help to keep these historic buildings thriving today, and tomorrow.



Friends of St Lawrence

The Mother's Union and Friends of St Lawrence Coffee Morning at the end of November was a great success this year with lots of people coming along to try out our famous bacon and sausage butties! There were cakes, raffles and plenty to buy for those last minute Christmas presents including some wonderful mini Christmas Cakes. Thank you to all those who worked so hard to make it happen, especially to those in the kitchen making the coffee and butties! A huge thank you to everyone who came along to support us, it was wonderful to see so many there and we made just over £900 during the morning which is an amazing result which will go towards the upkeep and maintenance of our beautiful and ancient village Church. Thank you!

Our next event is our ever popular

Friends Meal ... MONDAY 9TH FEBRUARY AT LA BANQ.

Please see the flyer for details and contact Wendy Meldrum or the Church Office if you would like to book tickets. Contact: wendymeldrum@gmail.com or Church Office on 01923 261795.



Quarter Peal

On Friday 5th December our bellringers rang a quarter peal. This was Lewis Yau's first quarter peal and quite an achievement as it is unusual to ring a bell other than the treble or tenor for a first attempt at a "doubles" method. Lewis started learning to ring in 2023 and is the son of the church safeguarding officer, Roxanne Yau.

Hertford County Association
Abbots Langley, Hertfordshire
St Lawrence Friday, 5 December 2025
in 43m (9-2-
25 in F#)

1260 Plain Bob Doubles

1 Sue Carpenter

2 James C Tuck

3 Lewis Y K Yau

4 Phillip B Higgs (C)

5 Andrew M Reeve

6 Evelyn J Parry

3 - first quarter at first attempt.



Breathing Space Schedule

St Lawrence Church, 5.00pm

(No Breathing Space in January)

1st Feb: *How can the Church survive?*

Relax, reflect, and join thoughtful discussions in a friendly setting.

Lovely refreshments will be provided.

All opinions welcome.

All are warmly welcome.

Musical opportunities at St Lawrence

Music plays a big part at St Lawrence Church. If you are interested in finding out more contact Director of Music, Marianne Chapman
Directorofmusic@abbotslangley.org.uk
and see poster on page 19 for more information on our Junior Choir.



Funerals taken in December

(Anne) Rosemary Johnson



**Local Independent
Funeral Directors**
Working for Local People



J & S Funeral Service is committed to providing professional, compassionate and dignified funeral services at very competitive prices. Our funerals can be tailored to suit individual requirements, from the more elaborate cortege with horse drawn hearse to a simple eco funeral, and all receive the same high level of personal service and attention to detail.

We provide:

- a personal and professional 24 hour service;
- accessible office with car parking at front of premises;
- a private Chapel of Rest;
- funeral services for the whole of the West Herts area;
- services for all faiths and denominations;
- home arrangements, if preferred;
- Golden Charter pre-paid funeral plans;
- motor and horse drawn hearses;
- floral and monumental tributes.

17 School Mead, Abbots Langley WD5 0LA
Tel: 01923 262939 (24 hours)

Penny Waterman School of Dance

Children's Ballet Classes



In St Lawrence's Church Hall, Abbots Langley
for ages 2 to 8 years
Saturday mornings
9.00 – 9.30am Ages 2 - 4 years
9.40 – 10.10am Ages 5 - 8 years

Tel: 01727 858632
Email: pwsd@pennywaterman.com
www.pennywaterman.com

Abbots Langley Gardening Society

www.algs.org.uk
FOR ALL YOUR GARDENING NEEDS
Shop open all year, monthly Social Evenings
Newsletters, Outings, 2 Shows, discounted seeds
CAN YOU AFFORD NOT TO JOIN?
Jane Lay (Sec) - 01923 447281 (message only)



Phil Davis

Professional, independent advice
for all your holiday and travel needs
ABTA Bonded ~ ATOL Holder

Tel: 01494 415010

phil.davis@thepersonaltravelagents.co.uk

**Caroline Freeman BSc Hons &
Licentiate in Acupuncture**

Traditional Chinese Medicine & Five Element
Acupuncturist
Acupuncture for both physical and emotional
support & balance
Free 15-minute phone consultation to discuss
any symptoms you are experiencing and
answer any questions you have.

07590 528645

caroline@healinghandsacupuncture.co.uk
<https://www.healinghandsacupuncture.co.uk>

**Mandy Thomas Experienced Private Carer
DBS certificate and fully insured**

Assisting in the home.; personal care; doctors/
hospital appointment; planning/cooking meals; trips
out; shopping trips; experienced hairdresser.

Please call me 07725891029

**£50.00 per year to advertise
in this space.**

Contact the Church Office:
adminstlawrence@abbotslangley.org.uk

GARSTON TV & RADIO

FOR ALL YOUR DOMESTIC ELECTRICAL
SALES, SERVICES & REPAIRS
YOUR LOCAL EURONICS DEALER
74 HIGH STREET, ABBOTS LANGLEY
Tel - 01923 263738

Meeting Rooms for Hire
Church Hall (Fully equipped kitchen)
Breakspear Room (Basic kitchen facilities)
Church of the Ascension (Basic kitchen facilities)

PARISH DIRECTORY

The code 01923 precedes all the telephone numbers unless stated otherwise

Abbeyfield (West Herts) Society	Marcus Coultrup (334387)
Bedmond Bells WI	Janette Noonan 01923 266921 or Moira Bunting 01923 262242
Bedmond Village Carpet Bowls	Margaret Forrest (670989)
Bedmond Village Hall	Simon Smith (07401 331302)
Bell Ringing	Phill Higgs (07973 265666)
Bowling Club	off Langley Road (alongside the Scout HQ)
Breakspeare Community Pre-School	(by Tannerswood School) (274483)
Brownies, Rainbows and Guides	www.girlguiding.org.uk/interested
A/L Carers and Former Carers Support Group	Brenda Southorn 07933 144117
Churches Together	Brenda Southorn 07933 144117
Citizens Advice Bureau	01923 271 707, see advertisement on page 4
Community Centre	(to hire 07530 266293)
Cricket Club	www.abbotssc.hitssports.com
Evergreen Youth FC	Ian Turner (266640)
Family Planning	Garston Clinic (234525) Mon & Wed 6.00 – 8.00 pm
Flower Arrangement Society	Sylvia Clinton (262678)
Friends of St Lawrence	Bill Sanderson (265963) / Wendy Meldrum (07710688633)
Friends of The Tin Church	Church Office: 01923 261795
Gardening Society	Jane Lay (447281)
Gilbert & Sullivan Society	Brenda Southorn 07933 144117
Hillside Residents Association	School Mead (261734)
Home Start (Helping Families Under Stress)	(248010)
Infant Welfare Clinic	St Saviour's Hall - Monday 1.30 to 3.00 pm (264639)
Jo Jingles	Mags Bilson (222529)
Library	Open: Mon & Thu 1.00pm-6.00pm; Tue & Fri 9.30am-6.00pm Sat 9.30am - 1.00pm; Wed & Sun closed all day
Little Fawns Pre School	07852 146857 Email: abbotslangley@littlefawnspre-school.co.uk
Local History Society	Or visit www.littlefawnspre-school.co.uk
Mothers' Union	Delva O'Reagan (267585)
Orchestra (ALO)	Jill Matthews (262046)
Parent & Toddler Group	Penny Abbot (01442 873205)
Parish Council and Halls	Community Centre; Tue, Wed & Friday 9.15-11.15 am
Players (ALP)	Council Office, Langley Road (265139)
Royal British Legion	Jean James (461549)
St Lawrence Church Hall	Secretary: Chris Driscoll (01923 675563)
St Lawrence Church Flower Arrangers	Church Office (261795)
Scouts: 1st Abbots Langley (3rd North Watford)	Church Office (261795)
Langleybury Scout Group	Chair: Richard Gabriel chair@abbotslangleyscouts.co.uk
Youth FC	5thnwscouts@gmail.com
	Tim Denyer (270563)

GPS PRINTWORKS

**We have moved to:
Unit 7 Mowat Industrial Estate
Watford WD24 7UY**



For all your printing needs....

**Tel: 01923 242128
Kevin: sales@gpsprintworks.co.uk
Lea: studio@gpsprintworks.co.uk**

Malawi Project

OUR NEXT EVENT: SING A LONG

We are delighted to welcome back this very popular event!

Come and join us for a ...

SING A LONG ON SATURDAY JANUARY 31st ST LAWRENCE CHURCH HALL AT 6PM

This will be a fun evening singing along to a popular and well known musical.

See Wendy Meldrum for details and book your ticket £7.00pp. There will be light refreshments and BYO drink. Contact: wendymeldrum@gmail.com or Church Office on 01923 261795.



New PCC Committees

Perhaps not the most exciting headline ever – but we have two new committees heading up vital areas of our church's life, and we're looking for more people to get involved. The Discipleship and Evangelism committee has a very simple brief: to help our church grow both in numbers and in faith. How do we share our faith with all sorts of people, how do we become an attractive community, how do we help people grow in their

relationship with God? The Pastoral Committee will be looking at questions like: how does this church care for bereaved people? How can we do more about poverty than simply giving food to the foodbank? How can we become a church where people don't fall through the cracks? Pretty essential stuff – and well worth your time. Speak to Tom Betteridge about the Discipleship Committee, and Ann Maskill about the Pastoral Committee – or Peter about both!

A Rocha UK's Easy Eco Tips

Start 2026 with Nature's Calendar. This citizen science project from the Woodland Trust is a long-term study of wildlife trends. Thousands of volunteers have been recording, for example, the date when they saw the first leaf appear or when the first bluebell flowered. There are now years of data helping scientists to see how the seasons are shifting. This is a great way to get outdoors even in the colder months and contribute to valuable wildlife recording. See naturescalendar.woodlandtrust.org.uk to find out more.

For more eco tips visit:
arocha.org.uk/wild-christian



QR Codes

If you would like to access the website for either St Lawrence and the Church of the Ascension or for St Albans Cathedral, you can do so by scanning the QR codes below.

QR code for St Lawrence Church and The Church of the Ascension



QR code for St Albans Cathedral



Churchwardens

Richard Baldwin
(churchwarden1@abbotslangleys.org.uk)

Tom Betteridge
(churchwarden2@abbotslangleys.org.uk)

St Lawrence Church Abbots Langley *and*
The Tin Church Bedmond

To submit an article for Outlook, please contact the Church office.

CONTACTS

Vicar: The Revd Dr Peter Waddell
Tel: 01923 263013
Email: vicar@abbotslangleys.org.uk

Curate: The Revd Helen Neville
Mobile: 07718 172642
Email: curate@abbotslangleys.org.uk

THE CHURCH OFFICE:
High Street
Abbots Langley
WD5 0AS
Tel: 01923 261795
Email: adminstlawrence@abbotslangleys.org.uk
Website: www.abbotslangleys.org.uk

Bedmond Bells Women's Institute

As this article is being written, we are still looking forward to the festive season – when you read it, it will all be over!

We enjoyed a lovely day on the Grand Union Canal at the beginning of December, cruising gently from Apsley to Hemel Hempstead and back, well looked after by a caring and friendly crew, and treated to mulled wine and mince pies as well. We were really lucky with the weather, a bright and sunny day in amongst all the rain and gloom. We are planning another trip in the summer, maybe an evening one this time.



We held a successful Community Café at the Tin Church in November, which everyone enjoyed, and are planning another on Monday 26th January, so come along for a light lunch of soup, filled roll, cake and a drink, served from 12 to 1.30pm. We hope to see you there.



Our last meeting of the year will be our Christmas celebration with good food and good company. We have planned a varied and interesting programme for next year, starting with a Games Evening on Friday 9th January. As always, visitors are very welcome. We meet in Bedmond Village Hall, at 7.30pm.



For further information, our contact details are as follows:

Carol Paley (President) –
07932 007353
Moira Bunting – 01923 262242
bedmondbellswi@gmail.com



St Lawrence's Junior Choir

Rehearsing Wednesdays 6.30-7:15pm
During term time

We're a **fun** and **friendly** choir who sing a big range of music, with the opportunity to perform an anthem (or two) every month in church.

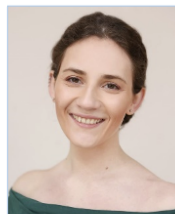
Rehearsals include **musical games** which help improve **rhythm & communication** skills, learning songs for our 2nd Sunday services, and working on **choral classics** to sing with the adult choir at major events.

We finish each term with a pizza party to say thank you for all their help in services, and to help everyone get to know each other even better.

No need for any previous musical experience, age KS2 & 3

Our Director of Music, Marianne Ryall, has worked with young people at many well-known music/performance groups including Stagecoach and Mini Mozart. She is a Cambridge music graduate and previous choral scholar.

For more information, please contact Marianne at
directorofmusic@abbotslangley.org.uk



Friends of St Lawrence
are delighted to present ...
An Evening at La Banq



MONDAY 9TH
FEBRUARY
7PM FOR 7.30PM

Come and join us for an evening at
La Banq: High Street, Abbots Langley,
WD5 0AR

All proceeds will be used for the maintenance and upkeep
of the ancient Church building of St Lawrence which lies
at the heart of our community of Abbots Langley.

Tickets price TBC for a two course meal.

Please contact:-

wendymeldrum@gmail.com or Church Office on 01923 261795

Deadline for all content for February Outlook is Friday 16th January